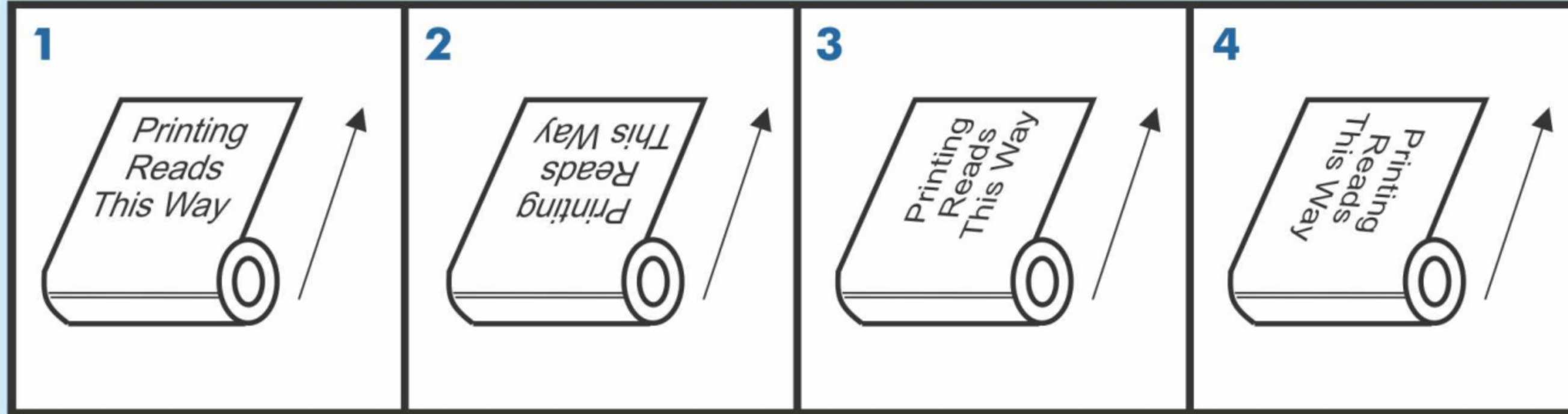
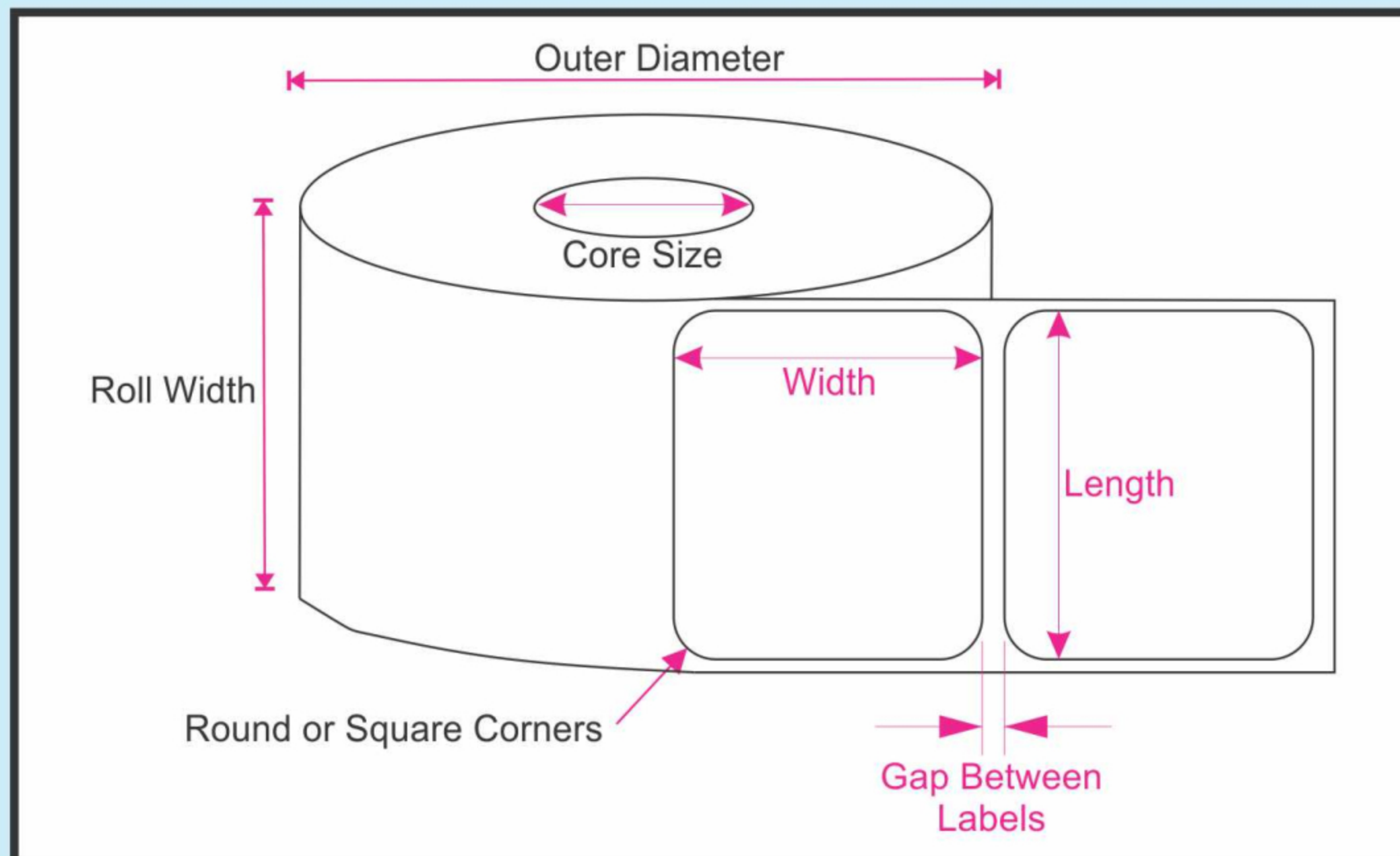
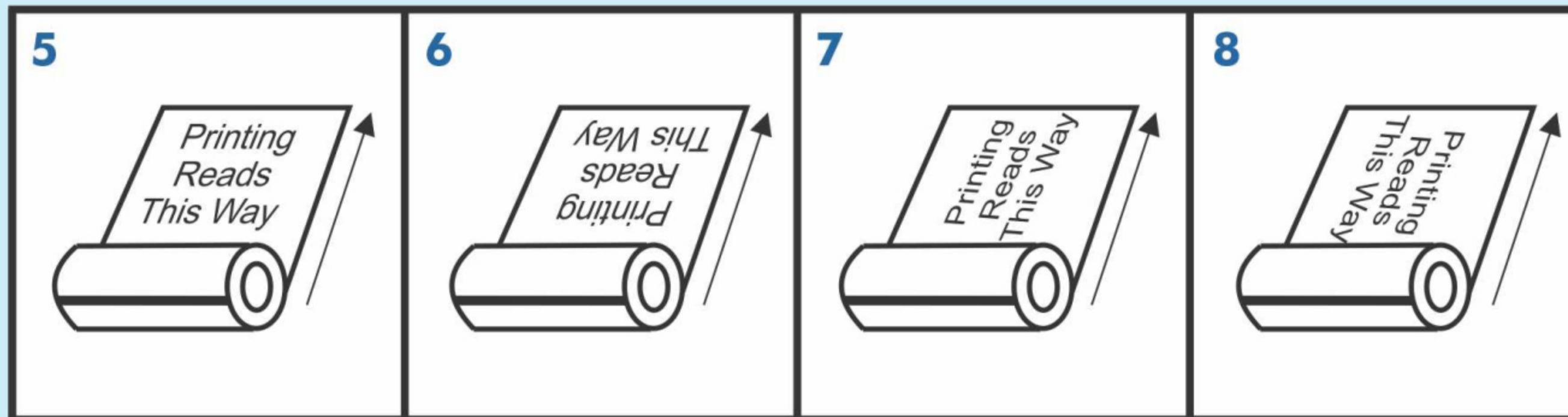


Label Roll - Production Check List

LABEL SIDE OUT



LABEL SIDE IN



- ❖ Material Specifications
- ❖ Label Size
- ❖ Square or Round Corners
- ❖ Adhesive Type (Permanent - Industrial, high or low tack)
 - (Removable)
 - (Reusable / Re-positionable)
- ❖ Print
- ❖ Label Format (Sheet or Roll)
- ❖ Roll Direction
- ❖ No. of Labels / Roll
- ❖ Gap Between Labels
- ❖ Lamination
- ❖ Core Size
- ❖ Outside Roll Diameter Size
- ❖ Packing requirement
- ❖ Hand-Applied or Machine-Applied